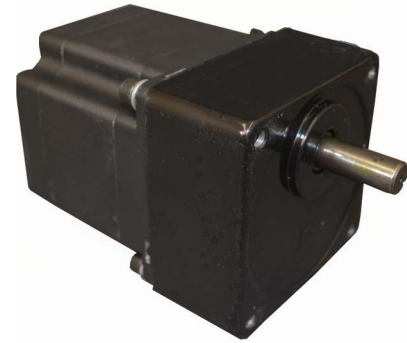


34YSG Series Gear Motor



FEATURES

- **NEMA Size 34**
- **Twelve Gear Ratios from 3 to 150**
- **Best Selection for High Speed Applications**
- **Higher Torque than Other Motor Manufactures**
- **1.8° Step Angle**
- **High Torque - Up to 3,500 oz-in**
 - **Winding Current**
 - **Shaft Options**
 - **Connectors**
- **CE Certified and RoHS Compliant**



DESCRIPTION

The 34YSG Series gear motors offer a great value without sacrificing quality. A broad line of motor windings, gear ratios, and stack lengths are available off-the-shelf, or the motors can be customized to fit your machine requirements. The standard 8-lead motors can be connected in all possible configurations: series, unipolar, or parallel, to allow the maximum flexibility for your application. We can also customize the winding to perfectly match your voltage, current, maximum operating speed, and gear ratios.

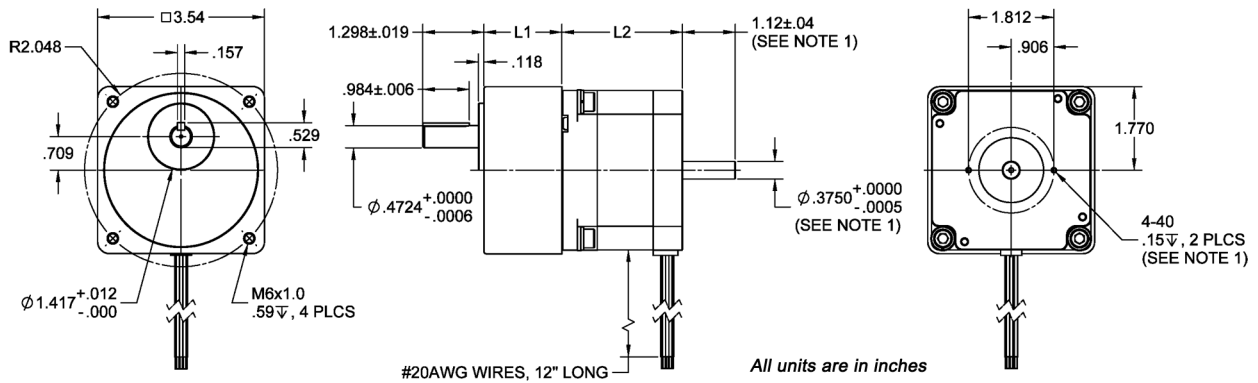
SPECIFICATIONS

Headers	Motor Bipolar Torque (oz-in)	Peak Torque (oz-in)	Series Current (A)	Actual Gear Ratio	L1 (inches)	L2 (inches)	Total Length (inches)	Reflected Rotor Inertia (oz-in-sec ²)	Average Backlash (deg)	Weight (lbs)
34YSG008S-LW8-R3	590	1770	2.8	3:1	1.77	2.56	4.33	0.126	4	5.4
34YSG106-LW8-12.5	650	1950	2.8	12.6:1	1.77	3.15	4.92	3.100	4	6.52
34YSG106S-LW8-R50	650	1950	2.8	50:1	1.77	3.15	4.92	49.564	2.5	7.38
34YSG108S-LW8-R3	650	1950	2.8	3:1	1.77	3.15	4.92	0.180	4	6.7
34YSG108S-LW8-R12.5	650	3500	2.8	12.6:1	1.77	3.15	4.92	3.175	4	6.7
34YSG108S-LW8-R50	650	3500	2.8	50:1	2.36	3.15	5.51	50.00	2.5	6.7
34YSG207S-LW8-R5	1200	3500	2.5	4.985:1	1.77	4.65	6.42	0.944	4	9.62
34YSG207S-LW8-R12.5	1200	3500	2.5	12.6:1	1.77	4.65	6.42	6.033	4	9.7
34YSG207S-LW8-R25	1200	3500	2.5	24:1	1.77	4.65	6.42	23.897	3.5	9.8
34YSG207S-LW8-R50	1200	3500	2.5	50:1	2.36	4.65	7.01	95.00	2.5	9.8
34YSG307S-LW8-R12.5	1700	3500	2.5	12.6:1	1.77	6.14	7.91	9.040	4	12.86
34YSG307S-LW8-R50	1700	3500	2.5	50:1	2.36	6.14	8.50	142.50	2.5	13.1
34YSG314S-LW8-R3	1700	3500	4.9	3:1	1.77	6.14	7.91	0.510	4	12.52
34YSG314S-LW8-R12.5	1700	3500	4.9	12.6:1	1.77	6.14	7.91	9.040	4	12.84

Notes: Refer to 34Y Series Motor Specifications for complete list of available motors to match to gear ratios of 3, 5, 10, 12.5, 15, 25, 30, 50, 75, 100, 120 or 150. Peak torque values can be greater in some applications. Backlash is determined by the Gear Ratio. LW8 is for 8 leadwires, other leadwire options are available. The 9th character "S" denotes a single shaft, use "D" for double shaft. Double shafts include encoder mounting provisions. Custom leadwires, cables, connectors, and windings are available upon request.

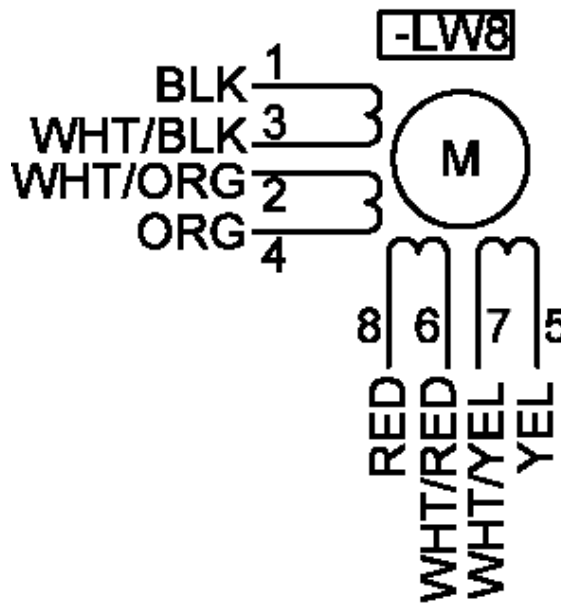
L010209

DIMENSIONS



Note: on models 34YSGXXD-LWX

WIRING INFORMATION



SPECIFICATIONS

Step Angle Accuracy:	±5% (Full Step, No Load)	Insulation Resistance:	100M Ohm Min, 500VDC
Resistance Accuracy:	±10%	Dielectric Strength:	820VAC/s for 3 mA
Inductance Accuracy:	±20%	Shaft Radial Play:	0.02" Max (1.0 lb load)
Temperature Rise:	80°C Max (2 Phase On)	Shaft Axial Play:	0.08" Max (1.0 lb load)
Ambient Temperature:	-20° to +50° C	Max Radial Force:	49.5 lbs (0.79" from flange)
Insulation Type:	Class B	Max Axial Force:	13.5 lbs-Force